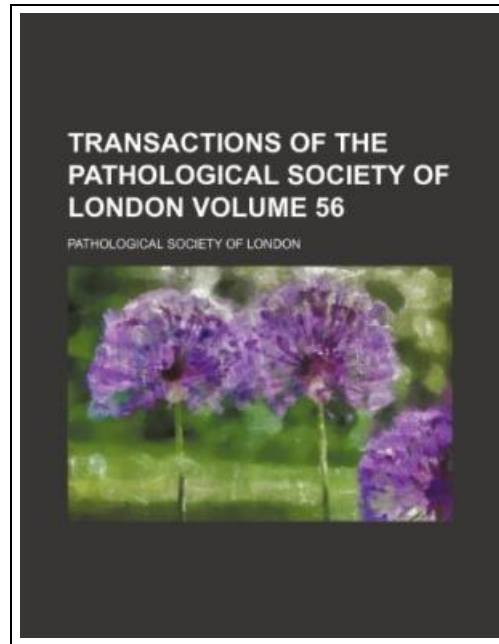


Transactions of the Pathological Society of London Volume 56



Filesize: 9.53 MB

Reviews

This sort of book is every little thing and got me to searching ahead and a lot more. This can be for all those who statte there was not a well worth reading through. I am just easily could possibly get a delight of reading through a published pdf.
(Floy Rolfson)

TRANSACTIONS OF THE PATHOLOGICAL SOCIETY OF LONDON VOLUME 56

To read **Transactions of the Pathological Society of London Volume 56** eBook, make sure you follow the link under and download the document or gain access to additional information which are in conjunction with TRANSACTIONS OF THE PATHOLOGICAL SOCIETY OF LONDON VOLUME 56 book.

RareBooksClub. Paperback. Book Condition: New. This item is printed on demand. Paperback. 138 pages. Dimensions: 9.7in. x 7.4in. x 0.3in. This historic book may have numerous typos and missing text. Purchasers can download a free scanned copy of the original book (without typos) from the publisher. Not indexed. Not illustrated. 1905 Excerpt: . . . and two caeca joining posteriorly to form a terminal ampulla. The oesophagus, surrounded by small glands, is constricted at its middle, and divides, just anterior to the acetabulum on which rests the posterior sucker, into the two caeca which run along either side of the body. Three anastomoses of caeca were made out. The excretory system ends in an excretory pore which is subterminal and ventral. The nervous system has not been satisfactorily determined. The reproductive system consists of a lobular testicle or testicles, vesiculi seminales, vas deferens, and genital pore with its sphincter, opening centrally into the gynaeophoric canal behind the posterior sucker. A distinctive feature of this schistosome is the absence of ciliated warts on the integument, the presence of which constitutes so marked a feature of the African worm. Minor anatomical differences are: (a) smaller size of the worm; (b) its longer vas deferens; (c) the characters of the testes. Male worm with a portion of female, A, Male worm, showing caeca. B, Female. The female (Fig. 37, B) is almost cylindrical (diameter 0.113 mm.), longer, more slender, and darker than the male. The cervical constriction is quite as marked as in the male. The suckers, alimentary and excretory systems correspond with those of the male, except that the excretory pore is terminal. Owing to excessive fragility of the spirit specimen it was found impracticable to mount an entire specimen of the female worm. The reproductive system consists of a muscular, central,...



[Read Transactions of the Pathological Society of London Volume 56 Online](#)



[Download PDF Transactions of the Pathological Society of London Volume 56](#)

See Also



[PDF] The Whale Tells His Side of the Story Hey God, Ive Got Some Guy Named Jonah in My Stomach and I Think Im Gonna Throw Up
Access the web link below to get "The Whale Tells His Side of the Story Hey God, Ive Got Some Guy Named Jonah in My Stomach and I Think Im Gonna Throw Up" PDF file.

[Read eBook](#)

»



[PDF] Animalogy: Animal Analogies

Access the web link below to get "Animalogy: Animal Analogies" PDF file.

[Read eBook](#)

»



[PDF] Yearbook Volume 15

Access the web link below to get "Yearbook Volume 15" PDF file.

[Read eBook](#)

»



[PDF] God Loves You. Chester Blue

Access the web link below to get "God Loves You. Chester Blue" PDF file.

[Read eBook](#)

»



[PDF] Molly on the Shore, BFMS 1 Study score

Access the web link below to get "Molly on the Shore, BFMS 1 Study score" PDF file.

[Read eBook](#)

»



[PDF] The Mystery at Motown Carole Marsh Mysteries

Access the web link below to get "The Mystery at Motown Carole Marsh Mysteries" PDF file.

[Read eBook](#)

»